

TELESCOPIC CYLINDER - 2500PSI



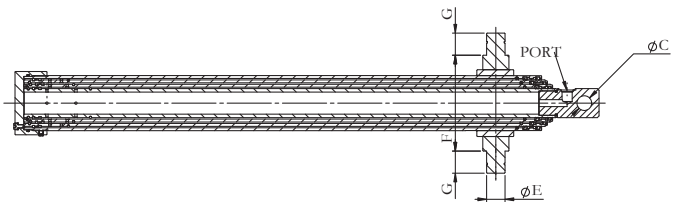
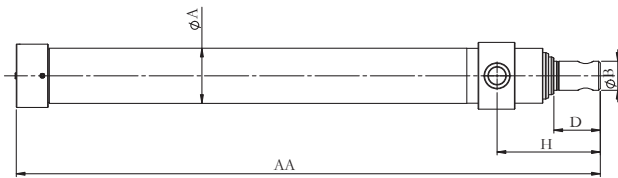
- 2,500 PSI working pressure
- Multiple stages enable longer strokes to be achieved, using less space
- Trunnion mount with angular swivels to allow a small amount of misalignment
- Micro-honed inside and chrome plated outside to increase corrosion, wear resistance and durability
- Available in 2 and 3 stage designs



Air bleeding for easily installation



Spherical bearing rod end is available



7Tons Capacity - 1 3/4", 2 3/8" & 3" sections-2,000 PSI Dimensions

Item No.	Capacity	Stroke	AA	A	ØB	ØC	D	ØE	F	G	H	Port	Oil Volumn	Weight
W07-ITC25-060-3-16	7 ton	60"	29.60"	3.74"	2"	1"	3.19"	1.25"	6.50"	1.25"	7"	1/2"NPT	2.35	65.5 lbs
W07-ITC25-078-3-16	7 ton	78"	35.50"	3.74"	2"	1"	3.19"	1.25"	6.50"	1.25"	7"	1/2"NPT	2.35	68.0 lbs
W07-ITC25-090-3-16	7 ton	90"	39.50"	3.74"	2"	1"	3.19"	1.25"	6.50"	1.25"	7"	1/2" NPT	2.70	75.0 lbs
W07-ITC25-108-3-16	7 ton	108"	45.50"	3.74"	2"	1"	3.19"	1.25"	6.50"	1.25"	7"	1/2" NPT	3.10	101.0 lbs

12Tons Capacity - 2 3/8", 3" & 3 5/8" sections-2,300 PSI Dimensions

Item No.	Capacity	Stroke	AA	A	ØB	ØC	D	ØE	F	G	H	Port	Oil Volumn	Weight
W12-ITC25-078-3-16	12 ton	78"	34.75"	4.43"	2"	1"&1.5"	3.54"	1.50"	7.61"	1.43"	7"	1/2" NPT	3.22	106.0 lbs
W12-ITC25-090-3-16	12 ton	90"	38.75"	4.43"	2"	1"&1.5"	3.54"	1.50"	7.61"	1.43"	7"	1/2" NPT	3.63	107.0 lbs
W12-ITC25-108-3-16	12 ton	108"	44.75"	4.43"	2"	1"&1.5"	3.54"	1.50"	7.61"	1.43"	7"	1/2" NPT	4.22	132.0 lbs
W12-ITC25-120-3-16	12 ton	120"	48.75"	4.43"	2"	1"&1.5"	3.54"	1.50"	7.61"	1.43"	7"	1/2" NPT	4.63	143.0 lbs
W12-ITC25-144-3-16	12 ton	144"	56.75"	4.43"	2"	1"&1.5"	3.54"	1.50"	7.61"	1.43"	7"	1/2" NPT	5.63	156.0 lbs

FRAME AND BOX BRACKETS

Item No.	Description
W07-ITC-FRAME	Frame Bracket for 7 ton and 12 ton cylinder
W07-ITC-BOX	Box Bracket for 7 ton cylinder(sale by pair)
W12-ITC-BOX	Box Bracket for 12 ton cylinder(sale by pair)

