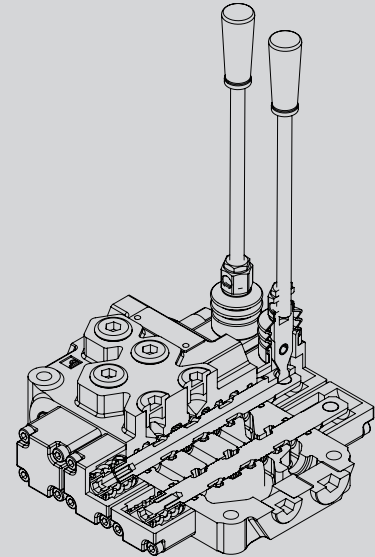


# MONO-BLOCK DIRECTIONAL CONTROL VALVE



## DESIGNATION SAMPLE MD - 12 1 1N B A 3 A 1 B

<b>MD</b>	MONO-BLOCK DIRECTIONAL
<b>12</b>	FLOW RATE
<b>1</b>	SPOOL NUMBER
<b>1N</b>	PORT SIZE
<b>B</b>	SPOOL TYPE
<b>A</b>	SPOOL ATTACHMENT
<b>3</b>	RELIEF VALVE
<b>A</b>	INLET
<b>1</b>	OUTLET
<b>B</b>	POWER BEYOND



<b>FLOW RATE</b>	<b>12</b> 12GPM						
<b>SPOOL NUMBER</b>	<table border="0"> <tr> <td><b>1</b> Single</td> <td><b>2</b> Two</td> <td><b>3</b> Three</td> </tr> <tr> <td><b>4</b> Four</td> <td><b>5</b> Five</td> <td><b>6</b> Six</td> </tr> </table>	<b>1</b> Single	<b>2</b> Two	<b>3</b> Three	<b>4</b> Four	<b>5</b> Five	<b>6</b> Six
<b>1</b> Single	<b>2</b> Two	<b>3</b> Three					
<b>4</b> Four	<b>5</b> Five	<b>6</b> Six					
<b>PORT SIZE</b>	<table border="0"> <tr> <td><b>4N</b> 1/2" NPT In/Out 3/8"NPT Work</td> <td><b>4B</b> 1/2" BSP In/Out 3/8"BSP Work</td> <td><b>10S</b> #10SAE In/Out #8SAE Work</td> </tr> <tr> <td><b>3N</b> 3/8" NPT In/Out 3/8"NPT Work</td> <td><b>3B</b> 3/8" BSP In/Out 3/8"BSP Work</td> <td><b>8S</b> #8SAE In/Out #8SAE Work</td> </tr> </table>	<b>4N</b> 1/2" NPT In/Out 3/8"NPT Work	<b>4B</b> 1/2" BSP In/Out 3/8"BSP Work	<b>10S</b> #10SAE In/Out #8SAE Work	<b>3N</b> 3/8" NPT In/Out 3/8"NPT Work	<b>3B</b> 3/8" BSP In/Out 3/8"BSP Work	<b>8S</b> #8SAE In/Out #8SAE Work
<b>4N</b> 1/2" NPT In/Out 3/8"NPT Work	<b>4B</b> 1/2" BSP In/Out 3/8"BSP Work	<b>10S</b> #10SAE In/Out #8SAE Work					
<b>3N</b> 3/8" NPT In/Out 3/8"NPT Work	<b>3B</b> 3/8" BSP In/Out 3/8"BSP Work	<b>8S</b> #8SAE In/Out #8SAE Work					
<b>SPOOL TYPE</b>	<table border="0"> <tr> <td><b>A</b> 4 way 3position / Open center</td> <td><b>B</b> 3 way 3 position / Open center / Single action</td> </tr> <tr> <td><b>C</b> 4 way 3position / Open center / Motor Spool</td> <td><b>D</b> 4 way 4 position / Open center / Float Spool</td> </tr> </table>	<b>A</b> 4 way 3position / Open center	<b>B</b> 3 way 3 position / Open center / Single action	<b>C</b> 4 way 3position / Open center / Motor Spool	<b>D</b> 4 way 4 position / Open center / Float Spool		
<b>A</b> 4 way 3position / Open center	<b>B</b> 3 way 3 position / Open center / Single action						
<b>C</b> 4 way 3position / Open center / Motor Spool	<b>D</b> 4 way 4 position / Open center / Float Spool						
<b>SPOOL ATTACHMENT</b>	<table border="0"> <tr> <td><b>A</b> 3 position Spring center to neutral</td> <td><b>B</b> 3 position detent (No centering spring)</td> </tr> <tr> <td><b>C</b> Pressure release detent 1 position detent spool"out" only.Spring center to neutral</td> <td><b>D</b> Pressure release detent 2 position detent spool"in"and "out"only. Spring center to neutral</td> </tr> <tr> <td><b>E</b> 4 position,spring center to neutral.Detent spool in for float position</td> <td></td> </tr> </table>	<b>A</b> 3 position Spring center to neutral	<b>B</b> 3 position detent (No centering spring)	<b>C</b> Pressure release detent 1 position detent spool"out" only.Spring center to neutral	<b>D</b> Pressure release detent 2 position detent spool"in"and "out"only. Spring center to neutral	<b>E</b> 4 position,spring center to neutral.Detent spool in for float position	
<b>A</b> 3 position Spring center to neutral	<b>B</b> 3 position detent (No centering spring)						
<b>C</b> Pressure release detent 1 position detent spool"out" only.Spring center to neutral	<b>D</b> Pressure release detent 2 position detent spool"in"and "out"only. Spring center to neutral						
<b>E</b> 4 position,spring center to neutral.Detent spool in for float position							
<b>RELIEF VALVE</b>	<table border="0"> <tr> <td><b>1</b> No relief</td> <td><b>2</b> Differential poppet Non-adjustable set at 1000psi</td> </tr> <tr> <td><b>3</b> Differential poppet Non-adjustable set at 2000psi</td> <td><b>4</b> Differential poppet adjustable 500-3000psi set at 1800psi</td> </tr> </table>	<b>1</b> No relief	<b>2</b> Differential poppet Non-adjustable set at 1000psi	<b>3</b> Differential poppet Non-adjustable set at 2000psi	<b>4</b> Differential poppet adjustable 500-3000psi set at 1800psi		
<b>1</b> No relief	<b>2</b> Differential poppet Non-adjustable set at 1000psi						
<b>3</b> Differential poppet Non-adjustable set at 2000psi	<b>4</b> Differential poppet adjustable 500-3000psi set at 1800psi						
<b>INLET</b>	<table border="0"> <tr> <td><b>A</b> End</td> <td><b>B</b> Top</td> </tr> </table>	<b>A</b> End	<b>B</b> Top				
<b>A</b> End	<b>B</b> Top						
<b>OUTLET</b>	<table border="0"> <tr> <td><b>1</b> End</td> <td><b>2</b> Top</td> </tr> </table>	<b>1</b> End	<b>2</b> Top				
<b>1</b> End	<b>2</b> Top						
<b>POWER BEYOND</b>	<table border="0"> <tr> <td><b>A</b> Closed center plug installed</td> <td><b>B</b> Conversion plug installed</td> </tr> <tr> <td><b>C</b> Power beyond plug installed with 1/2" NPT</td> <td><b>D</b> Power beyond plug installed with #10 SAE</td> </tr> </table>	<b>A</b> Closed center plug installed	<b>B</b> Conversion plug installed	<b>C</b> Power beyond plug installed with 1/2" NPT	<b>D</b> Power beyond plug installed with #10 SAE		
<b>A</b> Closed center plug installed	<b>B</b> Conversion plug installed						
<b>C</b> Power beyond plug installed with 1/2" NPT	<b>D</b> Power beyond plug installed with #10 SAE						

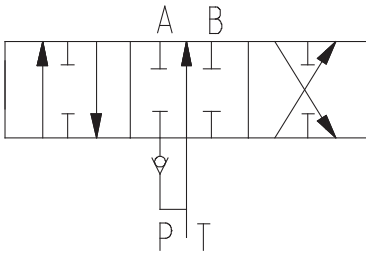
Notes: For other spool type, spool attachment and relief settings, please specify.

## MONO-BLOCK DIRECTIONAL CONTROL VALVE



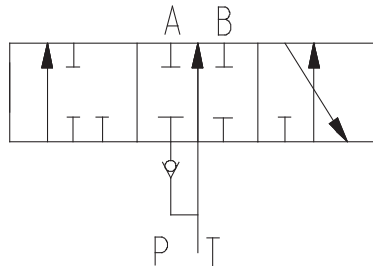
### SPOOL TYPE:

**A**



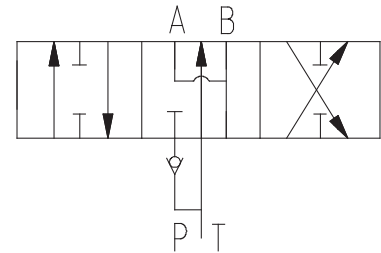
Open center. Powers cylinder or motor in both directions (metering capability is very limited). Pump unloads to tank when spool is in neutral. Cylinder or motor blocked when spool in neutral.

**B**



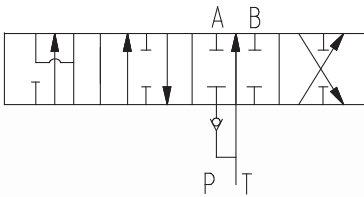
Open center Single Acting. This Spool option is used to control a single acting cylinder oraubidirectional motor.

**C**

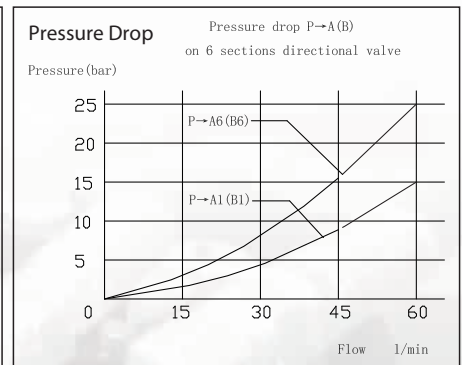
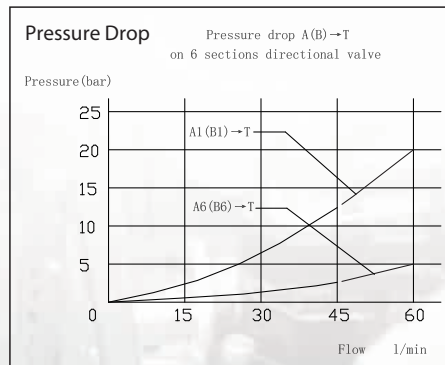
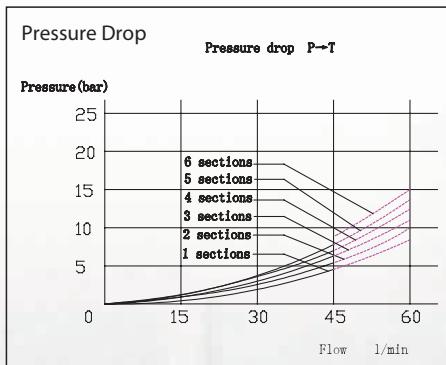


Open center Motor Spool. The spool option can be used to control a bi-rotational motor or a double acting cylinder. In neutral the work ports are open to the return. This allows a cylinder to drift or a motor to coast to a stop. In neutral the oil goes through the open center passage to the next spool of multi-spool valve or the power.

**D**



Open center Float Spool. The option is added fourth "float" position. In neutral the work ports are blocked, and oil goes through the open center passage to the next spool or power beyond.



### MONO-BLOCK DIRECTIONAL CONTROL VALVE

- Economical mono-block construction of high tensile strength gray cast iron
- Hard chrome plated spool
- Differential poppet style relief, adjustable from 500 to 3,000PSI, relief preset at 1,800PSI
- Power beyond and closed center capability
- Float spool, motor spool is available



MD1214NAA4A1B



MD1224NAAAA4A1B



MD1234NAAAAA4A1B



MD1244NAAAAA4A1B



MD1254NAAAAA4A1B



MD1264NAAAAA4A1B

Item No.	Product Name	Spool Type 1st/2nd/3rd	Spool Action 1st/2nd/3rd	I/O Port	Working Port	Flow Rate	Working Pressure	Weight
MD1214NAA4A1B	1-Spool	4-Way/3-Pos	Spring Center to neutral from either work position	1/2" NPT	3/8" NPT	12 GPM	3,000 PSI	6.4 lbs (2.9kgs)
MD1224NAAAA4A1B	2-Spool	4-Way/3-Pos 4-Way/3-Pos	Spring Center to neutral from either work position	1/2" NPT	3/8" NPT	12 GPM	3,000 PSI	10.0 lbs (4.5kgs)
MD1234NAAAAA4A1B	3-Spool	4-Way/3-Pos 4-Way/3-Pos 4-Way/3-Pos	Spring Center to neutral from either work position	1/2" NPT	3/8" NPT	12 GPM	3,000 PSI	13.3 lbs (6.0kgs)

### MONO-BLOCK DIRECTIONAL CONTROL VALVE



**Standard Features:**

- Parallel circuit
- Maximum operating pressure: 3,500PSI
- Maximum operating temperature: 180°F
- Maximum tank port pressure: 500PSI
- Recommend system filtration: Iso 4406 19/17/14

