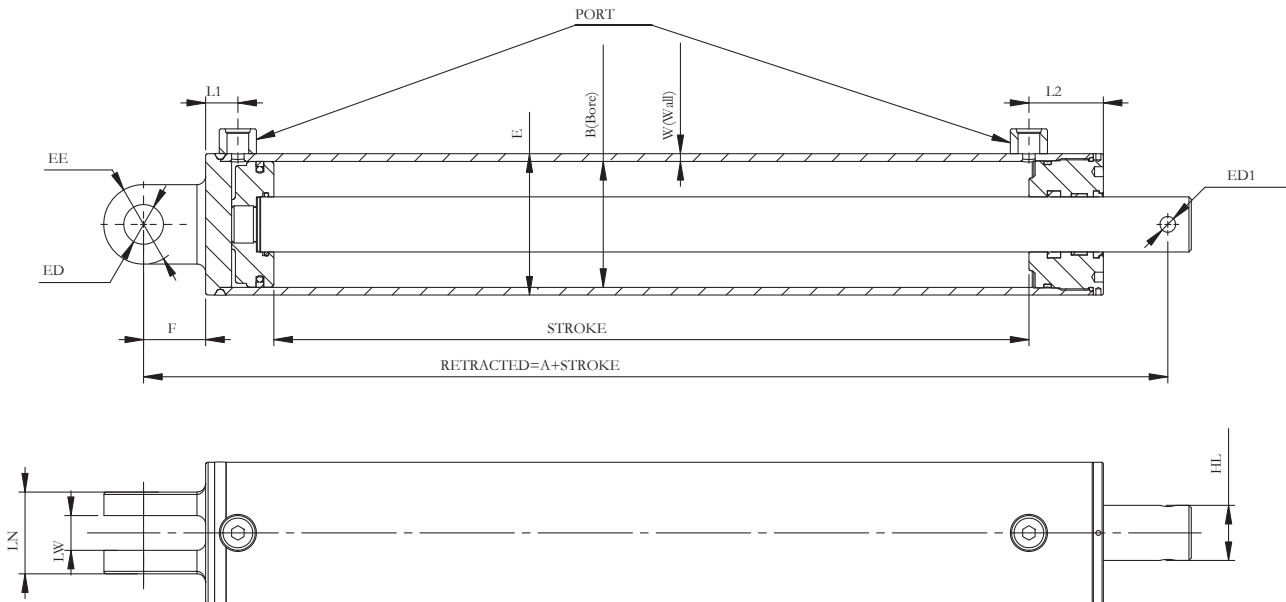


LOG SPLITTER CYLINDER 3500 PSI

- Double-acting application
- Durable ductile iron cast components
- Clevis mount with 1-1/4" pin hole in base end
- Drilled pin rod end, 1-3/4" to 2" shaft with a 1/2" drilled pin hole
- Can be used to build your own log splitter



Item No.	Bore	Stroke	Shaft	Retracted Length	Ports	Pin Dia	Weight
LS35352414-CLDH	3.5"	24"	1-3/4"	32-1/2"	SAE-8	1/2"	57.0 lbs
LS35402414-CLDH	4"	24"	1-3/4"	32-1/2"	SAE-8	1/2"	61.6 lbs
LS35452414-CLDH	4-1/2"	24"	1-3/4"	32-1/2"	SAE-8	1/2"	66.0 lbs
LS35502416-CLDH	5"	24"	2"	32-1/2"	SAE-8	1/2"	81.4 lbs