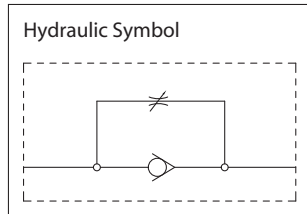


ADJUSTABLE IN-LINE THROTTLE VALVE

- Steel construction
- 5,000 PSI max continuous pressure
- Ideal for control of flow to hydraulic motors as a means of controlling motor speed

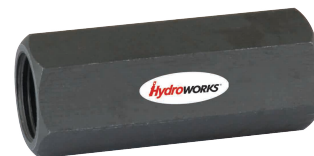
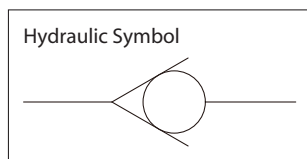


81509975

Item No.	Port Size	Working Pressure	Max Flow	Weight
81509975	1/4" NPT	5,000 PSI	5 GPM	0.5 lbs(0.2kgs)
81509974	3/8" NPT	5,000 PSI	10 GPM	0.9 lbs(0.4kgs)
81509973	1/2" NPT	5,000 PSI	15 GPM	1.5 lbs(0.68kgs)
81509972	3/4" NPT	5,000 PSI	30 GPM	2.5 lbs(1.1kgs)
81509971	1" NPT	5,000 PSI	40 GPM	3.5 lbs(1.6kgs)
81509976	1-1/4" NPT	5,000 PSI	50GPM	4.0lbs(1.8kgs)

IN-LINE CHECK VALVE

- Steel construction
- Max.continuous pressure: 5,000 PSI
- Designed to provide flow in one direction
- Function: used to isolate a circuit, provide component protection



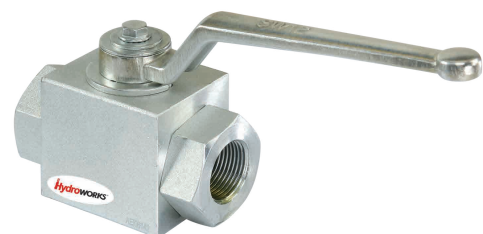
81509970

Item No.	Port Size	Working Pressure	Max Flow	Cracking Pressure	Weight
81509970	1/4" NPT	5,000 PSI	5 GPM	75 PSI	0.3 lbs(0.13kgs)
81509969	3/8" NPT	5,000 PSI	10 GPM	75 PSI	0.5 lbs(0.2kgs)
81509968	1/2" NPT	5,000 PSI	15 GPM	75 PSI	0.7 lbs(0.3kgs)
81509967	3/4" NPT	5,000 PSI	30 GPM	75 PSI	1.5 lbs(0.68kgs)
81509966	1" NPT	5,000 PSI	40 GPM	75 PSI	2.5 lbs(1.1kgs)

HIGH PRESSURE BALL VALVE

- Steel construction
- Steel ball
- POM ball seat
- BUNA-N stem seal
- Max pressure: 5,000 PSI

Item No.	Port Size	Working Pressure	Weight
81509965	1/4" NPT	7,250 PSI	1.0 lbs(0.45kgs)
81509964	3/8" NPT	7,250 PSI	1.5 lbs(0.68kgs)
81509963	1/2" NPT	5,800 PSI	2.0 lbs(0.9kgs)
81509962	3/4" NPT	4,568 PSI	4.0 lbs(1.8kgs)
81509961	1" NPT	4,568 PSI	6.0 lbs(2.7kgs)
81509966	1-1/4" NPT	4,568 PSI	8.0 lbs(6.4kgs)
81509967	1-1/2" NPT	4,568 PSI	10.0lbs(3.6kgs)
81509968	2" NPT	4,568 PSI	14.0lbs(4.5kgs)



81509965