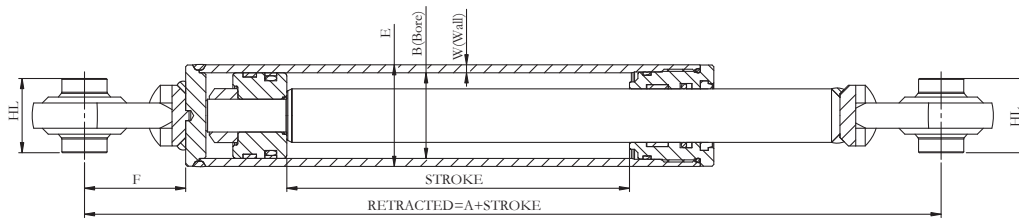
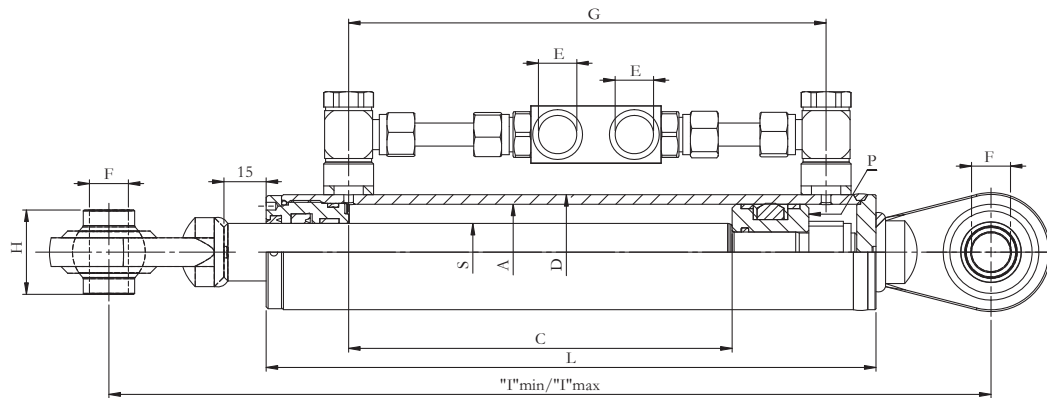


TOP LINK CYLINDER - 3000PSI

- Double-Acting
- 3,000 PSI working pressure
- Superior quality hard chrome-plated rod
- Swivel eye ends for 1" pin
- Operations in 3-point hitches
- Designed to work with systems that have tractor drawbar horsepower of 40-100 HP



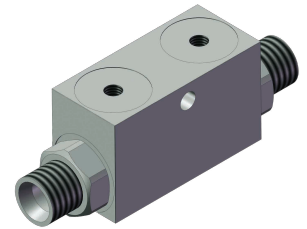
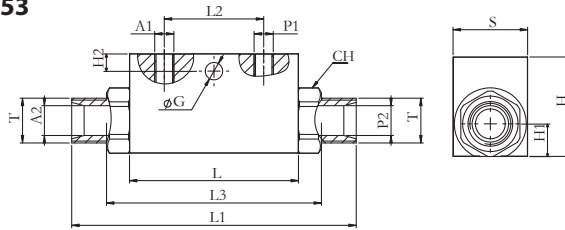
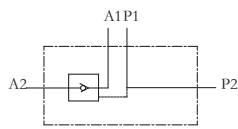
Item No.	Bore	Rod	Stroke	Weight
TC30251210	2.5"	1.50"	10"	22.00 lbs
TC30301210	3.0"	1.50"	10"	24.97 lbs
TC30251410	3.5"	1.75"	10"	29.04 lbs



With Pilot-operated Check Valve Din 2353

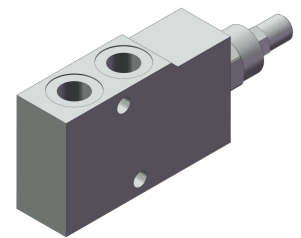
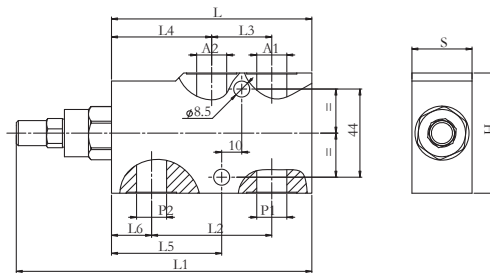
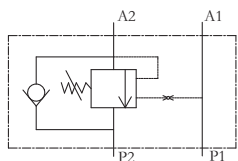
Item No.	A	S	C	L	D	E	Weight
TC30251012-P	Ø2.5"	Ø1.5"	10"	20.25"	Ø3.0"	SAE#8	22.8 lbs
TC30301012-P	Ø3.0"	Ø1.5"	10"	20.25"	Ø3.5"	SAE#8	25.5 lbs
TC30351014-P	Ø3.5"	Ø1.75"	10"	20.25"	Ø4.0"	SAE#8	39.6 lbs

Valve Accessories Options: Pilot-operated Check Valve Din 2353



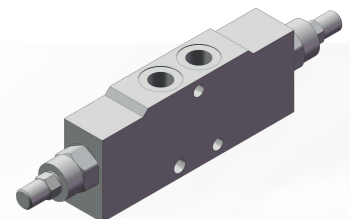
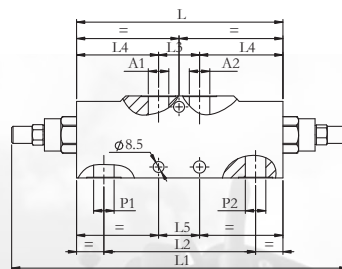
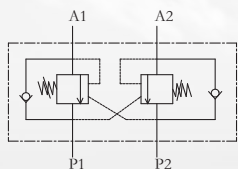
Item No.	A1-P1	A2-P2	T	Flow Max	Pressure Max	Pilot Ratio	L	L1	L2	L3	H1	H2	ØG	CH	H	S	Weight
DVA-PCS-N02	1/4" NPT	Ø12 NPT	M18X1,5	8GPM	5000PSI	1:4.5	2.7"	5.4"	1.5"	3.4"	0.5"	0.3"	0.3"	1.0"	1.6"	1.2"	1.43 lbs
DVA-PCS-N03	3/8" NPT	Ø15 NPT	M22X1,5	13GPM	5000PSI	1:4.0	3.1"	6.5"	1.6"	4.3"	0.6"	0.6"	0.3"	1.1"	2.0"	1.2"	2.09 lbs
DVA-PCS-N04	1/2" NPT	Ø18 NPT	M18X1,5	21GPM	5000PSI	1:4.0	3.5"	7.1"	1.6"	5.2"	0.8"	0.6"	0.3"	1.2"	2.4"	1.6"	3.63 lbs

Overcenter Valve Single Acting



Item No.	P1-P2	A1-A2	Flow Max	Pressure Max	Pilot Ratio	L	L1	L2	L3	L4	L5	L6	H	S	Weight
DVA-OVS-N02	1/4" NPT	1/4" NPT	5GPM	5000PSI	1:4.5	4.0"	5.8"	2.4"	1.2"	2.0"	2.2"	0.8"	2.4"	1.2"	2.86 lbs
DVA-OVS-N03	3/8" NPT	3/8" NPT	12GPM	5000PSI	1:4.5	4.0"	5.8"	2.4"	1.2"	2.0"	2.2"	0.8"	2.4"	1.2"	2.75 lbs
DVA-OVS-N04	1/2" NPT	1/2" NPT	16GPM	5000PSI	1:4.5	4.0"	5.8"	2.5"	1.4"	2.0"	2.3"	0.8"	2.4"	1.2"	2.64 lbs
DVA-OVS-N06	3/4" NPT	3/4" NPT	25GPM	5000PSI	1:5.5	5.0"	7.5"	3.3"	1.8"	2.5"	3.0"	0.9"	3.1"	1.4"	5.17 lbs

Overcenter Valve Double Acting



Item No.	P1-P2	A1-A2	Flow Max	Pressure Max	Pilot Ratio	L	L1	L2	L3	L4	L5	H	S	Weight
DVA-OVD-N02	1/4" NPT	1/4" NPT	5GPM	5000PSI	1:4.5	6.0"	9.7"	4.3"	2.0"	2.0"	1.2"	2.4"	1.2"	4.29 lbs
DVA-OVD-N03	3/8" NPT	3/8" NPT	12GPM	5000PSI	1:4.5	6.0"	9.7"	4.3"	2.0"	2.0"	1.2"	2.4"	1.2"	4.26 lbs
DVA-OVD-N04	1/2" NPT	1/2" NPT	16GPM	5000PSI	1:4.5	6.0"	9.7"	4.3"	2.0"	2.0"	1.2"	2.4"	1.2"	4.07 lbs
DVA-OVD-N06	3/4" NPT	3/4" NPT	25GPM	5000PSI	1:5.5	7.5"	12.6"	5.6"	2.5"	2.5"	1.7"	3.1"	1.4"	8.36 lbs

Ends Options: Weldable Ball Joint

Item No.	CAT	ØP	Z	S	ØD	D2	Weight
DSP-C1-P06	1	0.7"	2.0"	1.7"	2.4"	1.2"	1.18 lbs
DSP-C2-P08	2	1.0"	2.5"	1.6"	3.0"	1.5"	1.98 lbs

