

### TELESCOPIC CYLINDER - 3000PSI

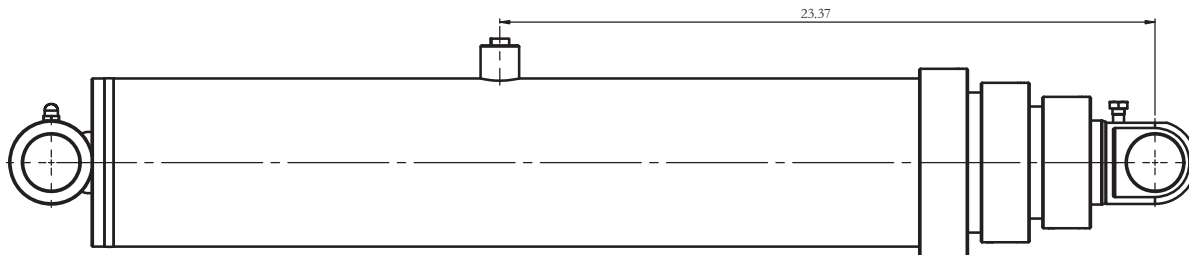
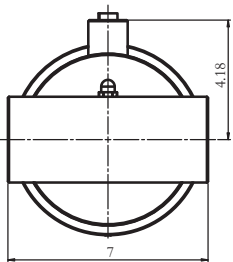


- Adjustable V-packing provides low-pressure and high-pressure sealing
- External packing nuts provide added support for tubes and simplify servicing. 3000 PSI Max.
- 1/2-14 NPT ports
- Polished steel or chromed stages
- Primer finished
- Volumes listed are at full extension



#### Plunger Lifting Capacities

Plunger Dia.(in)	lbs.@1500 PSI	lbs.@2000 PSI	lbs.@2500 PSI	lbs.@3000 PSI
3	10,590	14,120	7,850	9,420
4	18,840	25,120	17,650	21,180



#### ITC30 Series

Item No.	1st Plunger Dia.	Stroke	Retracted	Extended	Mount	Stages	Weight
ITC30-40-3-24	3"	40.38"	29.69"	70.07"	Crosstube	Three	60.0 lbs
ITC30-46-3-24	3"	46.67"	32.84"	79.51"	Crosstube	Three	65.0 lbs
ITC30-47-3-24	3"	47.25"	33.69"	80.94"	Crosstube	Three	86.0 lbs
ITC30-69-3-24	3"	69.14"	34.31"	103.45"	Crosstube	Three	135.0 lbs
ITC30-84-3-24	3"	84.20"	39.38"	123.58"	Crosstube	Three	165.0 lbs
ITC30-47-2-32	4"	47.25"	33.69"	80.94"	Crosstube	Two	97.0 lbs
ITC30-65-2-32	4"	65"	42.07"	107.07"	Crosstube	Two	115.0 lbs
ITC30-73-3-32	4"	73.88"	35.69"	109.57"	Crosstube	Three	109.0 lbs
ITC30-89-3-32	4"	89.83"	41.13"	130.96"	Crosstube	Three	124.0 lbs